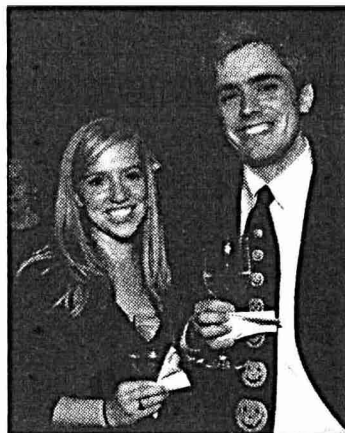


# OUT AND ABOUT

By Roger Farrington

## BLO'S "OPERATIC TRIP TO DARK SIDE"

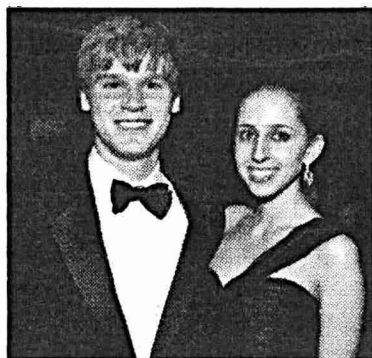
The Boston Lyric Opera (BLO) hosted its annual benefit fundraiser, Hocus Pocus: An Operatic Trip to the Dark Side, for 250 guests (many in spooky costume), at the Mandarin Oriental on October 22nd. Cocktails and dinner were interspersed with ghost stories, tall tales, and music of beguilement and incantation. BLO Artistic Advisor and recent NEA Opera Honors recipient John Conklin conjured up the evening's theatrical program that featured performances by mezzo-soprano Dorothy Byrne, Met Opera diva Sandra Piques Eddy and BLO Emerging Artists. Next up for the BLO is the February 2012 Opera Annex Production of "The Lighthouse," the first fully staged opera to be held at the John F. Kennedy Presidential Library and Museum.



*Libby Davis and Ben Davis.*



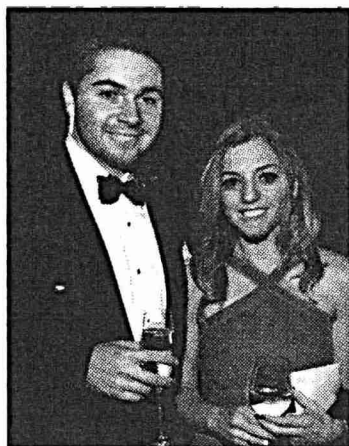
*Co chair Alan Dynner and Ann Beha.*



*Jason Schlundt and Rachel Beche.*



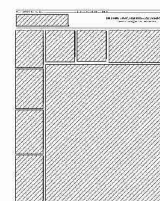
*Walter Cottingham and Sally Cottingham.*



*Matthew Bodman and Rachel Ben-ayun.*



*Co chairs Lisa Greiner and Willa Bodman.*



## How do you measure your bank?

DIAL 800 # —

PRESS # 2 —

YOUR CALL IS IMPORTANT TO US. —

PLEASE LISTEN CLOSELY AS OUR —

MENU OPTIONS HAVE CHANGED. —

ALL OUR ASSOCIATES ARE —

HELPING OTHER CUSTOMERS. —

WE'LL BE WITH YOU SHORTLY. —

OR YOU CAN VISIT CUSTOMER SERVICE ONLINE. —

PLEASE HOLD. —

CURRENT WAIT TIME IS 23 MINUTES. —

**The only menu we'll ask you to listen to includes dinner specials.**



**Open a Cambridge Trust Relationship Account by November 30, 2011, and we'll thank you with a \$150 dinner.\***

At Cambridge Trust, you'll always have our direct line, so it's easy to talk to an experienced banker. You can also count on anytime, anywhere access with online and mobile banking — as well as free worldwide ATMs. We'll even refund ATM surcharge fees from other banks.\*\* We'll make switching easy, just give us a call. You can reach Donna Petro, Beacon Hill Branch Manager, at 617-503-4140 or stop by the branch. If you prefer, you can open your account online at [www.cambridgetrust.com](http://www.cambridgetrust.com).

**Cambridge Trust Company**

PERSONAL BANKING | BUSINESS BANKING | WEALTH MANAGEMENT

\*Offer valid through 11/30/11. To obtain the \$150 gift certificate, you must open a new Premium or Premium Plus Relationship Account with a minimum checking balance of \$2,500 in funds not currently on deposit at Cambridge Trust Company and set up and receive direct deposit of your paycheck, Social Security or pension check to your account within 60 days of opening your account. The gift certificate will be mailed to primary account holder within thirty days after requirements are met. Limit one per household. The cost of the dinner gift certificate (\$150.00) will be reported to the IRS as interest on your Form 1099-INT for the year in which it was received. Households who have received a dinner gift certificate or an Amazon Kindle® from Cambridge Trust are not eligible for this offer. Current Annual Percentage Yields are: .10% for Premium Plus and .05% for Premium Checking. Rates may change without notice. Please see the Account Disclosures and Rules & Regulations and Fee Schedule for details. \*\*Other banks may surcharge for use of their ATMs. ATM surcharge fees you receive from using other banks' ATMs will be refunded for Premium Plus Checking or up to \$15 per statement cycle for Premium Checking. You may link all related personal deposit accounts for which you have direct ownership to count toward the balance requirement to waive the monthly maintenance fee ("fee"). \$10,000 minimum average combined deposit balance for Premium Checking or \$16 fee, \$25,000 minimum average combined deposit balance, or a Cambridge Trust first mortgage for Premium Plus Checking, or \$25 fee. Fees may reduce earnings on account. Member FDIC