



Boston Lyric Opera Orchestra
Trumpet Sub List Auditions

Solo Repertoire:

The candidate will play 2-3 minutes of a solo of the candidate's choice.

Operatic and Orchestral Excerpts:

1. Donizetti: *Don Pasquale* – Act II Prelude: mm. 5 – 4mm. after Reh. 1
2. Verdi: *La Forza Del Destino*: mm. 1-8
3. Verdi: *La Forza Del Destino*: 7 measures after M - N
4. Beethoven: *Leonore* Overture No. 2: mm. 392 – mm. 411
5. Beethoven: *Leonore* Overture No. 3: 6 measures before E - E
6. Puccini: *Madama Butterfly*: Reh. 58 to end
7. Verdi: *Rigoletto*: Act II Scene 8: Allegro assai moderato

1. Donizetti: *Don Pasquale* – Act II Prelude: mm. 5 – 4mm. after Reh. 1

MAESTOSO

TROMBA 1^a
In SI \flat

TROMBA 2^a
In SI \flat

Cantabile
Sola
p

The image shows a page of musical notation for the Act II Prelude of Donizetti's *Don Pasquale*. The score is divided into four systems. The first system features two staves for Tromba 1 and Tromba 2, both in the key of B-flat major. The tempo is marked **MAESTOSO**. The second system begins the piano accompaniment, marked *Cantabile* and *Sola* with a piano (*p*) dynamic. The piano part includes triplet figures and melodic lines. The third and fourth systems continue the piano accompaniment with various rhythmic patterns and dynamics.

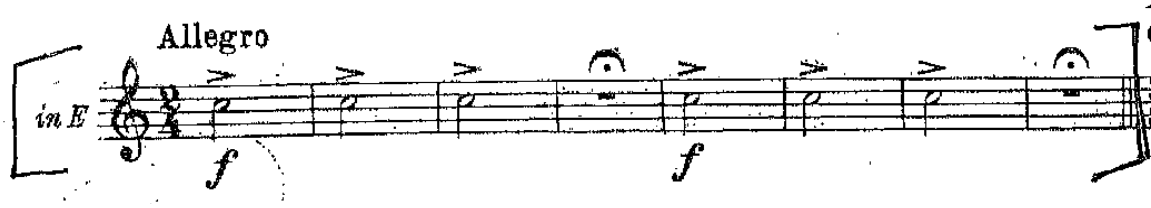
1

rall. a tempo

a piacere

RECIT.

2. Verdi: La Forza Del Destino: mm. 1-8



3. Verdi: La Forza Del Destino: 7 measures after M - N



4. Beethoven: *Lenore* Overture No. 2: mm. 392 – mm. 411

390 **Un poco sostenuto**
in Es (auf der Bühne)

395 **Tempo I** 8 **Un poco sostenuto**

407 in C

Detailed description: This musical score consists of three staves of music. The first staff begins at measure 390 with a treble clef and a key signature of one sharp (F#). It features a series of eighth notes, some grouped in triplets, and a fermata over a half note. A bracket above the staff indicates the tempo 'Un poco sostenuto' and the key signature 'in Es (auf der Bühne)'. The second staff starts at measure 395, continuing the eighth-note pattern with triplets. It includes a 'Tempo I' marking and a measure rest for 8 measures. The tempo 'Un poco sostenuto' is repeated. The third staff begins at measure 407, showing a change in key signature to C major ('in C'). It continues with eighth-note patterns and triplets, ending with a fermata over a half note.

5. Beethoven: *Leonore* Overture No. 3: 6 measures before E - E

Solo

Tempo I 70 *pp creso.* *ff*

Detailed description: This musical score consists of two staves of music. The first staff is marked 'Solo' and contains six measures of eighth-note patterns. The second staff begins with a treble clef and a key signature of one sharp (F#). It features a 'Tempo I' marking with a tempo of 70. The dynamics are marked 'pp creso.' (pianissimo crescendo) and 'ff' (fortissimo). The music consists of eighth-note patterns with some rests and a final measure with a fermata over a half note.

6. Puccini: *Madama Butterfly*: Reh. 58 to end

Butterfly 58 *And: Energico*

allarg. *tutta forza*

allarg. *stentato* *allarg. molto* *fff*

The image shows a musical score for the character Butterfly in Puccini's opera Madama Butterfly. It consists of three staves of music. The first staff begins with a rehearsal mark '58' and the tempo marking 'And: Energico'. The music starts with a melodic line in treble clef, marked 'allarg.' (ritardando) and 'tutta forza' (with full force). The second staff continues the melodic line. The third staff features a more complex accompaniment with chords and a melodic line, marked 'allarg.' (ritardando), 'stentato' (staccato), and 'allarg. molto' (ritardando molto). The piece concludes with a fortissimo 'fff' dynamic and a final chord. There are some performance markings like accents and slurs throughout the score.

7. Verdi: *Rigoletto*: Act II Scene 8: Allegro assai moderato

Allegro assai moderato

p

24

pp

pp

f